

HR94D1

Safety



The Perfect Sliding Door Side Screen or Door Threshold Pedestrian Safety Sensor

Versatile and simple to set up, the HR94D1 protects pedestrians from the dangers of both opening and closing sliding doors at mounting heights of up to 3m



- **Sliding Door Side Screen Pedestrian Safety**
Protect pedestrians from the dangerous leading door edge during door open cycles with a dense curtain of infrared safety
- **Door Threshold Pedestrian Safety**
Safeguard pedestrians from hazardous door closures due to a shallow but wide infrared safety curtain
- **Solid & Reliable**
Avoid the risk of loss or damage to individual sensor parts through a one piece sensor body construction
- **Simple to Install**
Install with ease without the need for a remote control thanks to comprehensive instructions printed on the sensor body



www.hotron.com



HR94D1

Safety



Technical Specification

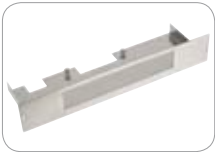
Accessories



1200R
Spacer for installation
on a round door



UTB-HR100
Ceiling attached bracket



ITB-HR100
Ceiling recessed bracket



Cable-2.5M
Hotron 2.5M Cable



HR94D-COV/S
Silver sensor cover
HR94D-COV/BL
Black sensor cover



WC/BL
Black weather cover

Model	HR94D1 Pedestrian Door Safety	
Detection Method	Active Infrared Detection	
Installation Height	Max 3000mm (10ft)	
Sensor Dimensions	210mm (W), 65mm (H), 30mm (D)	
Pattern Adjustment	Width Adjustment: Wide or Narrow (Dials) Depth Adjustment: Body Angle Adjustment 0° - 5° in 3 steps	
Presence Timer	2, 15, 60 & 180 seconds	
IP Rating	54	
Power Supply	12 to 32V AC or DC ± 10%	
Power Consumption	AC12V-1.8 [VA] (Max), DC12V-100 [mA] (Max) AC24V-2.8 [VA] (Max), DC24V-60 [mA] (Max)	
Output Relay	Relay contact: DC50V 0.1A (Resistance Load)	
Relay Hold Time	Approx. 0.5 sec	
LED Indication	Power On	= Green ON
	Detecting	= Red ON
	Detecting Door	= Orange ON
	Self Diagnostics	= Red/Green FLASHING
Operating Temperature	-20°C to +60°C, (-4°F to 140°F)	
Weight	190g (0.42 lbs)	
Available Colours	Black: Product Code	= HR94D1/BL
	Silver: Product Code	= HR94D1/S
Accessories Provided	2.5m Connection Cable Mounting Template Mounting Screws Installation Instructions	

Detection Area (inches/mm)

